

## Description

The Pall AcroPrep 24-well filter plate family uses high performing membranes that enable fast filtration with superior flow rates and low protein binding, making them ideal for a variety of applications. The 24-well format allows up to 7 mL of sample to be filtered, eliminating the need to process samples with other labor intense methods and resulting in time savings. Because continuity of membrane media is important to researchers, these plates contain the same superior membranes found in other Pall device formats. Researchers can confidently incorporate Pall Laboratory 24-well filter plates into their workflow without costly and time-consuming membrane evaluations.

### AcroPrep 24-well Filter Plates

- Comprehensive 24-well filter plate portfolio
- Available with high performance membranes
- for specific applications and workflow needs
- EKV and Supor plates are gamma irradiated
- All plates come with receiver plate and lid
- Plates are constructed from chemically-resistant, biologically-inert polypropylene
- 7 mL volume capacity
- Automation compatible – Manufactured in accordance with SBS guidelines

## Specifications

### Materials of Construction

#### Filter Media

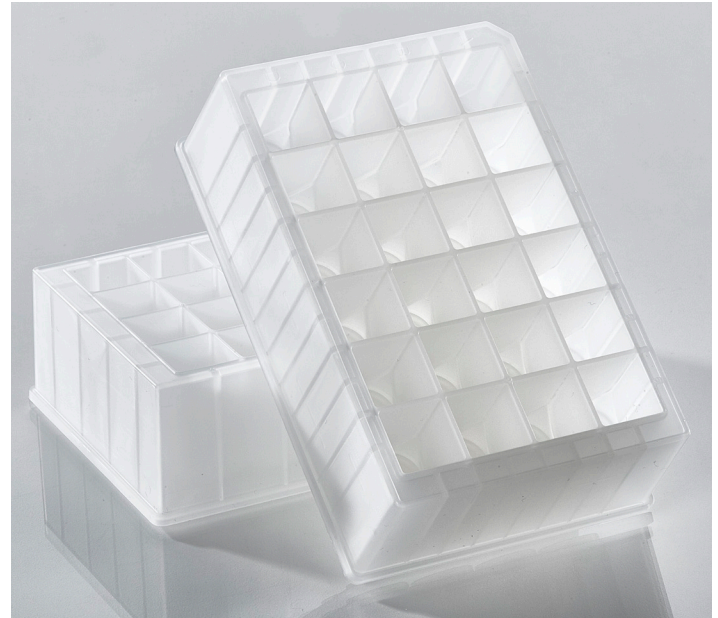
Seitz® Depth Media  
 Supor® EKV (Hydrophilic polyethersulfone membrane)  
 Supor (polyethersulfone membrane)  
 Omega™ (modified polyethersulfone membrane)  
 PP/PE non-woven (polypropylene/polyethylene)

#### Plate Housing

Polypropylene

#### Lid

Polystyrene



### Recommended Working Volume (Max)

7 mL for vacuum  
 6 mL for centrifugation

### Recommended Processing Conditions

Vary by plate membrane type

### Dimensions

Length: 12.8 cm (5.0 in)  
 Width: 8.6 cm (3.4 in)  
 Height (with receiver plate): 7.5 cm (2.97 in)  
 Height (without receiver plate): 3.9 cm (1.5 in)  
 Well-Bottom Area: 1.6 cm<sup>2</sup> (0.24 in<sup>2</sup>)

## Typical Hold Up Volume

		Omega						PP-PE	Supor
		1	3	10	30	50	100		
Hold Up Volume (μL)	Centrifuge	19.3	9.8	26.5	24.6	12.8	7	5.5	63
	Vacuum	14	21.2	74.9	14.6	28.8	28.5	13.7	78
	Positive Pressure	7.7	15.6	2.8	28.1	70.9	59.3	4.3	35
Processing Time (min)	Centrifuge	170	135	70	60	60	100	< 10	< 12
	Vacuum	165	135	85	60	60	30	< 1	< 2
	Positive Pressure	155	70	45	50	55	25	< 1	< 5

## MWCO Selection Guide

### MWCO Selection for Protein Applications

MWCO	Biomolecule Molecular Weight
1K	3K-10K
3K	10K-20K
10K	30K-90K
30K	90K-180K
50K	150K-300K
100K	300K-900K

### MWCO Selection for Nucleic Acid Applications

MWCO	Base Pairs (DS)	Bases (SS)
1K	5-16 Bp	9-32 Bs
3K	16-32 Bp	32-65 Bs
10K	50-145 Bp	95-285 Bs
30K	145-285 Bp	285-570 Bs
50K	240-475 Bp	475-950 Bs
100K	475-1,450 Bp	950-2,900 Bs

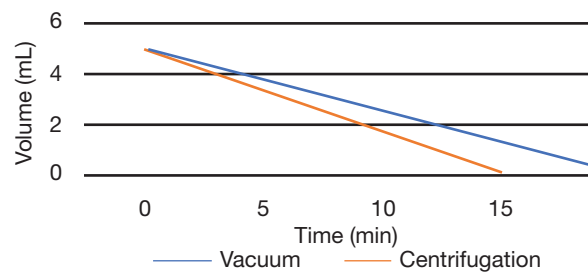
### MWCO Selection for Virus Applications

MWCO	Membrane Nominal Pore Size	Virus or Particle Diameter
100K	10 nm	30 – 90 nm
300K	35 nm	> 90 nm

## Performance of Clarification and Sterile Filtration Plate

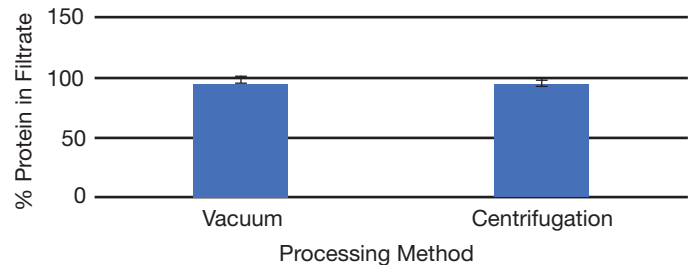
**Figure 1**

Evaluation of time to process 5 mL of CHO cells with a density of 25 M cells/mL; Vacuum filtration performed at 15 in Hg; Centrifugation performed at 1,000g



**Figure 2**

Protein recovery from high-density CHO cells cultures after being through a 24-well plate (Depth + EKV media); 5 mL of CHO cells at a density of 25 M cells/mL



## Ordering Information

### Cell Clarification and Sterile Filtration

Fisher Scientific Part No.	Pall Part No.	Description	Pkg
17164651	97016	7 mL, Seitz Depth Media/0.2 µm Supor EKV	2/pkg
17184651	97026	7 mL, Seitz Depth Media/0.2 µm Supor EKV	8/pkg

### General Filtration

Fisher Scientific Part No.	Pall Part No.	Description	Pkg
17399471	97029	7 mL, 0.1 µm Supor	8/pkg
17309481	97030	7 mL, 0.1 µm Supor	2/pkg
17174651	97017	7 mL, 0.2 µm Supor EKV	8/pkg
17194651	97027	7 mL, 0.2 µm Supor EKV	2/pkg
17319481	97031	7 mL, 0.45 µm Supor	8/pkg
17329481	97032	7 mL, 0.45 µm Supor	2/pkg
17339481	97033	7 mL, 0.8 µm Supor	8/pkg
17349481	97034	7 mL, 0.8 µm Supor	2/pkg
17359481	97035	7 mL, 1.2 µm Supor	8/pkg
17369481	97036	7 mL, 1.2 µm Supor	2/pkg
17379481	97047	7 mL, 5 µm Supor	8/pkg
17389481	97048	7 mL, 5 µm Supor	2/pkg
17319501	97061	7 mL, 30-40 µm, PP/PE	8/pkg
17329501	97062	7 mL, 30-40 µm, PP/PE	2/pkg

## Concentration, Buffer Exchange, Desalting of Proteins and Peptides and Nucleic Acids

Fisher Scientific Part No.	Pall Part No.	Description	Pkg
17399481	97049	7 mL, Omega 1K MWCO	8/pkg
17309491	97050	7 mL, Omega 1K MWCO	2/pkg
17319491	97051	7 mL, Omega 3K MWCO	8/pkg
17329491	97052	7 mL, Omega 3K MWCO	2/pkg
17339491	97053	7 mL, Omega 10K MWCO	8/pkg
17349491	97054	7 mL, Omega 10K MWCO	2/pkg
17359491	97055	7 mL, Omega 30K MWCO	8/pkg
17369491	97056	7 mL, Omega 30K MWCO	2/pkg
17379491	97057	7 mL, Omega 50K MWCO	8/pkg
17389491	97058	7 mL, Omega 50K MWCO	2/pkg
17399491	97059	7 mL, Omega 100K MWCO	8/pkg
17309501	97060	7 mL, Omega 100K MWCO	2/pkg

Distributed by Fisher Scientific. Contact us today:

Austria: fishersci.at **Belgium:** fishersci.be **Denmark:** fishersci.dk  
**Germany:** fishersci.de **Ireland:** fishersci.ie **Italy:** fishersci.it  
**Finland:** fishersci.fi **France:** fishersci.fr **Netherlands:** fishersci.nl  
**Norway:** fishersci.no **Portugal:** fishersci.pt **Spain:** fishersci.es  
**Sweden:** fishersci.se **Switzerland:** fishersci.ch **UK:** fishersci.co.uk

© 2021 Thermo Fisher Scientific Inc. All rights reserved.

Trademarks used are owned as indicated at fishersci.com/trademarks.

